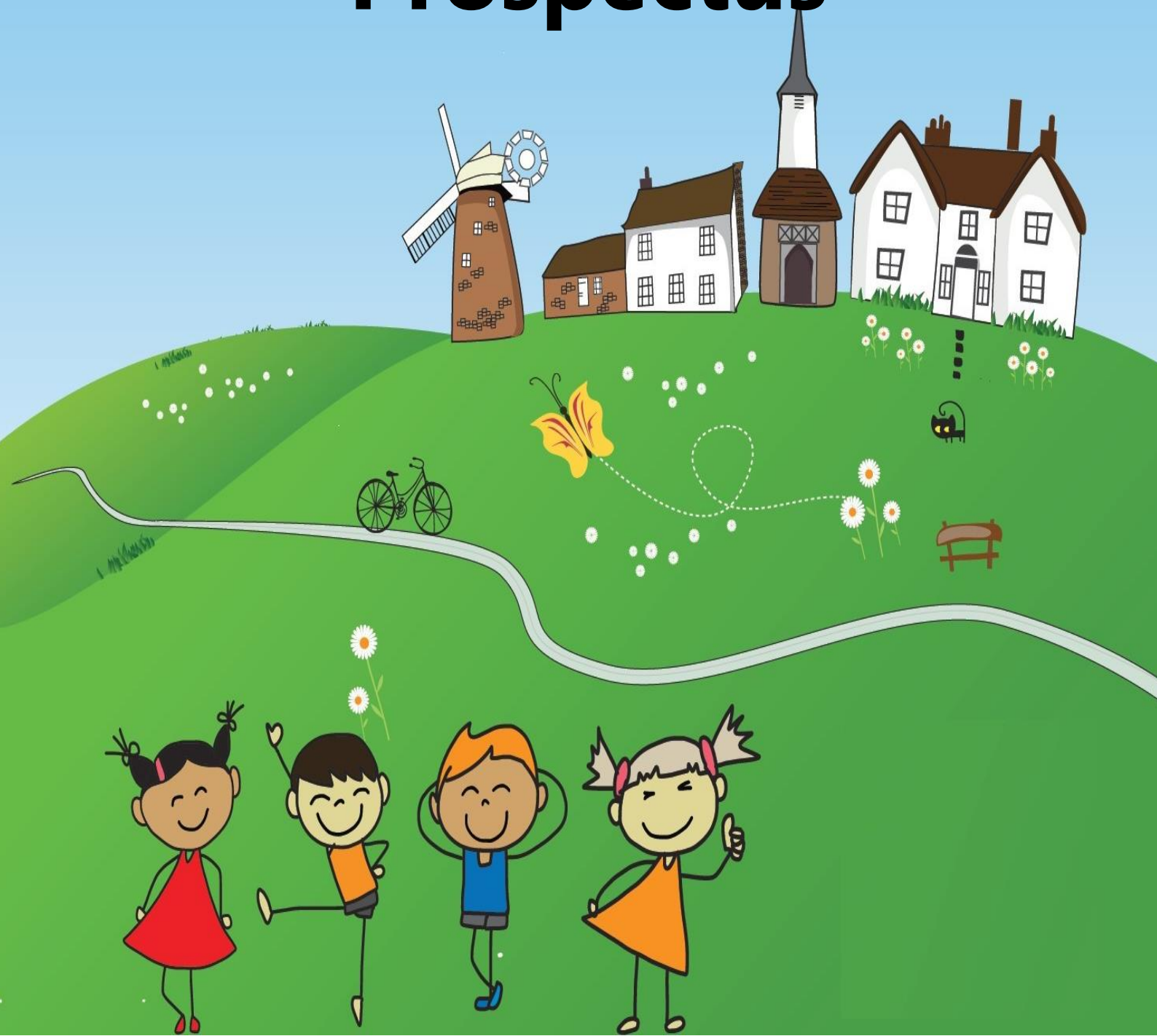


Meldreth Preschool Prospectus



Introduction

Meldreth Pre-School runs in a purpose built Early Years classroom within Meldreth Primary School. We provide exceptional care and education for children between the ages of 2 and 5 in a safe, secure and happy environment.

We encourage and support all children, including those with special needs and disabilities, to learn through play whilst having fun, allowing them to thrive and fulfil their own potential in all areas of development in accordance with the Early Years Foundation Stage Curriculum (EYFS).

We were awarded a 'Good' Ofsted rating at our last inspection, which we believe is a reflection of the high quality and individual care children receive in our exciting and nurturing learning environment.

All of our staff are highly qualified and have individual areas of interest, which they incorporate into the children's activities, such as cooking, craft and gardening, which ensures the children are exposed to a wide range of activities.

Our staff are continually updating and adding to their training and qualifications including those of paramount importance, Safeguarding and First Aid.

All children are assigned a Key Person when they start at preschool, who are responsible for ensuring the children settle well into our routines. Children's progress is recorded via an online learning journal, Tapestry, which is accessed jointly by parents and the staff team. We encourage parents to use the journal interactively, to add to it, and to make comments on photos which have been added whilst your child is in our care. This is in addition to informal catch-ups with your child's Key Person and regular parental involvement, which we encourage.

Our morning sessions run from 8.45am to 11.45am and our afternoon sessions run from 1 to 3.15pm. We also offer a paid lunch club from 11.45-12.15. We are open Monday to Friday during Meldreth Primary School term time.

In the summer term we often run our extremely popular 'Fledgling' sessions designed especially for those children starting primary school the following year. These sessions are planned to ensure that their transition to primary school goes smoothly. Our strong links with Meldreth Primary School enables us to use the school playing field for many activities including bug hunts and our sports day and to join in many activities that the school are holding.



We have our own outdoor area for free play as well as a mud kitchen and encourage the children to learn outside and regularly make use of our play house to tell stories and play games under.

Our sessions include planned activities, free play and exploration as well as small group learning specific activities. All children are offered a healthy snack in every session to help keep their tummies full but also to help them explore new foods and independent eating.

We ask that children are provided with a suitable sized lunch rather than giving the children too much choice for example:

- A sandwich
- A piece of fruit
- A yoghurt
- A packet of crisps or biscuit bar

Please also note that we are a nut free school.

We can now offer the option for a school provided packed lunch for £2.00 per child per day. Menus are available from the preschool.

We offer privately funded places as well as Free Early Education Entitlement Places (FEEE) for 3 & 4 year olds (15 hours/week).

Working parents may be entitled to up to 30 hours of funded sessions. To see if you are eligible, please contact HMRC. More information can be found on the following HMRC website: <https://www.gov.uk/apply-30-hours-free-tax-free-childcare>

We also offer privately funded and free childcare places for 2 year olds. To see if you are eligible for free childcare for your 2 year old or to see if you are eligible for the Extended Entitlement please see:

www.childcarechoices.gov.uk

We are registered for both Childcare Vouchers and Tax Free Childcare.

Our Early Years Provision at Pre-school is managed by Meldreth Primary School Governing Body through its Section 27 community powers. Practice is overseen by our Early Years Leader, Kate Samways and is led by practitioners.

A 1:8 adult child ratio will be in operation with EYFS qualification requirements in place. Our website contains further information, including all of our policies and procedures - take a look at the information available on it.

<http://www.meldreth.cambs.sch.uk/web>

If you would like to come and take a look around our setting please contact us on 01763 260432 and we will arrange a time to meet you and show you around. We are sure you will love it as much as we do.

We ask parents to complete a Registration of Interest Form to join our waiting list and then nearer to the time your child starts, all parents sign a Parent Contract and complete the necessary paperwork.



Ofsted said...



"The excellent key-person system helps to ensure that the well-qualified members of staff support each child and their family."

"Children see positive interaction between their parents and staff. This helps them to feel settled and secure."



Meldreth Primary School, High Street, Meldreth, Royston, Hertfordshire, SG8 6LA

Email office@meldreth.cambs.sch.uk

Tel 01763 260432

"Children communicate confidently and increase their vocabulary while sharing books, chatting as they share news or collaborating in imaginary play."

