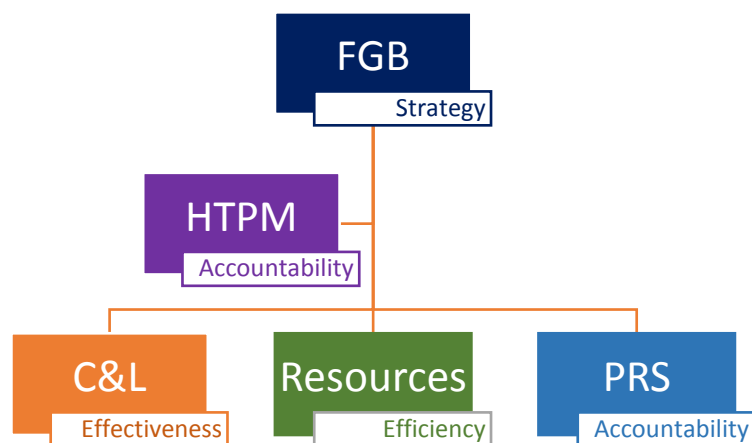


MPS GB Committee Structure 2018-2019



Membership

Name	Category of Governor	Term of Office
Sasha Howard	Headteacher	Commensurate with headship
Emma Tidby (Chair)	Co-opted	Sept 2018 – Sept 2022
Liz Poulson	Co-opted	Jan 2018 – Jan 2022
Clare Yelton	Parent	Nov 2017 - Nov 2021
Sarah Helme	Parent	Dec 2017 - Dec 2021
Lyndsay Lees	Co-opted	Oct 2018 – Sept 2022
Caroline Maskell	Staff	Jan 2018 – Jan 2022
Neil O'Regan	Co-opted	Sept 2016 – Sept 2020
Chris Mannix	Associate Member	Sept 2018 – Sept 2022
Paul Hopkins	Co-opted	July 2017 – July 2021
Antonio Mariconda (vice-chair)	Local Authority	Nov 2017 – Nov 2021
Janet Williams	Co-opted	Nov 2017 – Nov 2021

HTPM

- Lyndsay Lees (Chair)
- Emma Tidby
- Neil O'Regan

Pay Review and Salaries

- Neil O'Regan (Chair)
- Emma Tidby
- Paul Hopkins
- Janet Williams

Children & Learning Committee

- Antonio Mariconda (Chair)
- Liz Poulson (Vice Chair)
- Lyndsay Lees
- Caroline Maskell
- Sasha Howard
- Sarah Helme
- Emma Tidby

Resources Committee

- Janet Williams (Chair)
- Clare Yelton (Vice Chair)
- Neil O'Regan
- Paul Hopkins
- Chris Mannix
- Sasha Howard
- Emma Tidby

Link governors

Name	Monitoring role	Governance role
Emma Tidby		Chair of Governors, Chair of C/L
Clare Yelton	GDPR	
Antonio Mariconda	Pupil & Sport Premium	Vice-Chair
Lyndsay Lees	SEND, LAC	Chair of HTPM
Caroline Maskell	Health & Safety	
Neil O'Regan	Finance	Chair of PRS
Sarah Helme		Governor induction, Training
Chris Mannix		
Janet Williams	Safeguarding, Child protection	Chair of Resources
Paul Hopkins	Personnel	

Governor teams

Academy Working Group

Sasha Howard

Emma Tidby (Chair of Governors)

Reports

Governor visits -> Chair/Headteacher -> Committee -> FGB

Training -> Sarah Helme -> FGB

Reports can be put on Governor's secure web-area ready for discussion at the next meeting