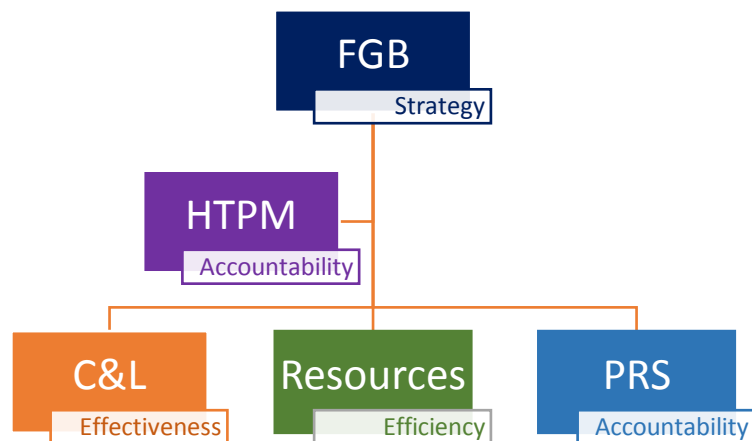


MPS GB Committee Structure 2017-2018



Membership

Name	Category of Governor	Term of Office
Sasha Howard	Headteacher	Commensurate with headship
Emma Tidby (Chair)	Co-opted	Sept 2014 – Sept 2018
Barbara Thomas	Staff	Sept 2017 – Sept 2021
Vacancy	Parent	
Vacancy	Parent	
Lyndsay Lees	Co-opted	Sept 2014 – Sept 2018
Caroline Maskell	Co-opted	Sept 2014 – Sept 2018
Neil O'Regan	Co-opted	Sept 2016 – Sept 2020
Sarah Helme	Associate Member	Sept 2015 – Sept 2016
Chris Mannix	Associate Member	Sept 2016 – Sept 2017
Paul Hopkins	Co-opted	
Vacancy	Local Authority	
Vacancy	Co-opted	

HTPM

- Lyndsay Lees
- Emma Tidby
- Neil O'Regan

Pay Review and Salaries

- Neil O'Regan
- Emma Tidby
- Chris Mannix

Children and Learning Committee

- Emma Tidby
- Lyndsay Lees
- Caroline Maskell
- Sasha Howard
- Paul Hopkins
- Barbara Thomas

Resources Committee

- Neil O'Regan
- Sarah Helme (AM)
- Chris Mannix (AM)
- Sasha Howard

Link governors

Name	Monitoring role	Governance role
Emma Tidby (Chair)	Child protection, Safeguarding, Standards	Chair of Governors, Chair C/L
Barbara Thomas		
Parent		
Parent		
Lyndsay Lees	SEND	Chair of HTPM
Caroline Maskell	Health & Safety	
Neil O'Regan	Finance	Chair of PRS
Sarah Helme	Personnel	Governor induction, CPD, training
Chris Mannix		Advisor to PRS

Governor teams

Standards	Academisation
Chair of Governors	Sasha Howard
Sarah Helme	
Chris Mannix	

Reports

Governor visits	->	Chair/Headteacher	->	committee	->	FGB
Training	->	Sarah Helme	->	FGB		

Reports can be put on Governor's secure web-area ready for discussion at the next meeting