

Tell Me A Dragon

This half term, our focus is the world of dragons. We will explore mythical creatures and poetry.

Our English work will focus on *Tell Me a Dragon* by Jackie Morris. We will look at persuasive writing, poetry and instructions. The children will consolidate their use of expanded noun phrases and tense. We will look at commas in a list, commands and compound words.

In maths, Wren Class will complete properties of shape. The children then will apply their calculation strategies using money and move on to multiplication and division.

In science, the children will explore plants. They will explore how seeds and bulbs grow into mature plants, what plants need to stay healthy and observe how plants change over time.

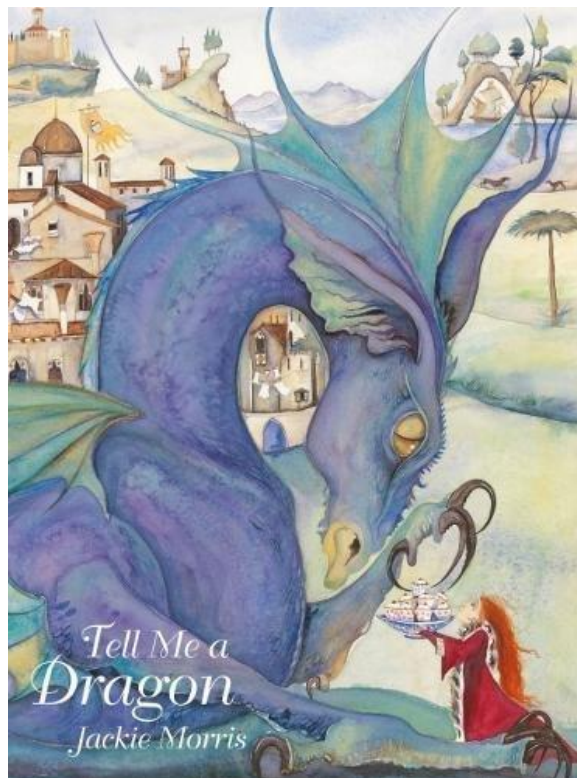
Our PSHCE units this half term are e-safety and conflict resolution.

In computing, we will focus on questioning.

In RE, Wren Class will be looking at Judaism and what it means to be Jewish.

In PE, we will complete the gymnastics unit 'Linking' and dance unit 'Explorers'.

In music, the children will look at inventing a musical story.



Our art and design focus this term will be sculpture and the children will have the chance to work with clay.

In history, the class will look at fossil hunter, Mary Anning and the significance of her discoveries.

In geography, the class will look at continents and countries.