

# 2020 KS1 School Dashboard

for governors & school leaders

Produce custom dashboards  
at [fftaspire.org](https://fftaspire.org)

## Meldreth Primary School

LA Cambridgeshire DfE 8732029 Produced August 2020 Version 1

### What it is

Seven easy-to-use reports that help governors and school leaders to evaluate school performance using the latest 2019 DfE school performance indicators.

### What it tells you

What are the strengths, areas for improvement and under-performing groups of pupils

How does attainment and pupil progress compare to the national average over the last three years?

How are you performing in different subjects?

### Important for 2020

2020 data has been calculated using the teacher assessment data uploaded by schools who participated in the 2020 FFT Results Service. **The data is for internal use only and is NOT intended to be used for external accountability.**

With no test data available, this year's TA analysis should also be treated with additional care, especially when comparing to data from previous years. The 'national' comparator has been generated using the data supplied by participating schools. Please take this into account when analysing your school's data.

### About the data shown

1 2 3

#### Actual results

Actual results for your school, using a range of measures such as averages and thresholds.



#### Gauges

These display headline indicators and whether actual results and pupils' progress are in line with, or significantly above or below, the national average.

ESTIMATED



1 2 3

#### Pupil progress

The value added progress that your pupils have made from one key stage to the next. FFT compares your actual results to the estimated results based on the progress of similar pupils nationally.



#### Statistical significance

Green plus signs and red minus signs highlight where either actual results or pupils' progress is significantly above or below the national average.



#### Trends

The dashboard analyses school performance over 3-5 years. Any significant year-on-year improvement is highlighted using an up arrow. Significant declines in performance are highlighted with a down arrow.



#### Strengths & weaknesses

These highlight key pupil groups and subjects where progress is above or below the national average.

### Working in partnership with

Premier partner


National  
Governors'  
Association

### Data sources

2020 data has been calculated using the teacher assessment data uploaded by schools who participated in the 2020 FFT Results Service.

2020 self-evaluation reports have been calculated using the teacher assessments provided by schools as part of the FFT Results Service. ?

Meldreth Primary School

2020 KS1

## Overview

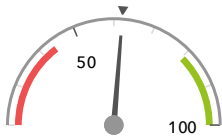
### KS1 Attainment 2020 · Actual results

29 pupils

% Expected Standard + (Re, Wr, Ma)

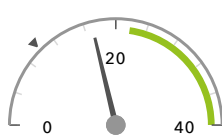
% Higher Standard (Re, Wr, Ma)

62%



In line with the national average (62%) ◀

17%



In line with the national average (10%) ◀

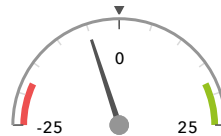
### KS1 Progress 2020 · Value Added

28 matched pupils

% Expected Standard + (Re, Wr, Ma)

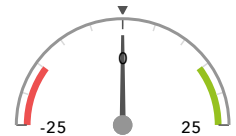
% Higher Standard (Re, Wr, Ma)

-5%



In line with the national average (0%) ◀

-0%



In line with the national average (0%) ◀

### KS1 higher and lower performing pupil groups 2020

Minimum group size: 5

	Higher performing	Lower performing
<b>Overall achievement</b> pupil progress	Summer Term (5) Autumn Term (8) No SEN (22)	SEN Support (6) Lower attainers (8) Spring Term (15)
<b>KS1 reading achievement</b> pupil progress	Summer Term (5) Autumn Term (8) Not FSM (25)	SEN Support (6) Spring Term (15) Lower attainers (8)
<b>KS1 writing achievement</b> pupil progress		Lower attainers (8) SEN Support (6) Female (17)
<b>KS1 mathematics achievement</b> pupil progress	Autumn Term (8) Male (11) No SEN (22)	SEN Support (6) Lower attainers (8) Summer Term (5)

2020 self-evaluation reports have been calculated using the teacher assessments provided by schools as part of the FFT Results Service. ?

Meldreth Primary School

2020 KS1

## Attainment & progress

### KS1 Attainment 2020

29 pupils

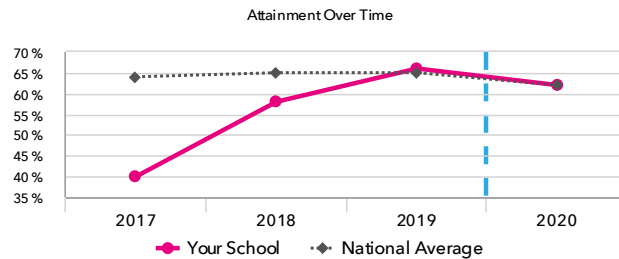
% Expected Standard + (Re, Wr, Ma)

62%

FFT Rank



In line with the national average (62%)



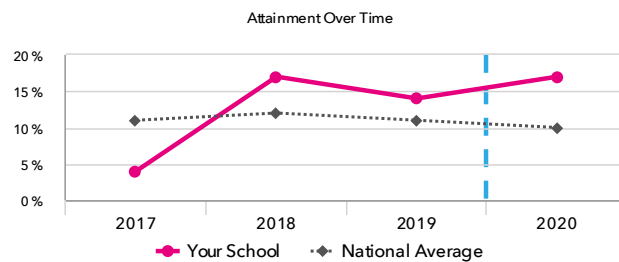
% Higher Standard (Re, Wr, Ma)

17%

FFT Rank



In line with the national average (10%)



### KS1 Progress 2020

28 matched pupils

% Expected Standard + (Re, Wr, Ma)

-5%

FFT Rank



In line with the national average (0%)

% Higher Standard (Re, Wr, Ma)

-0%

FFT Rank



In line with the national average (0%)

### KS1 performance summary

	Actual results			Pupil progress		
	2018	2019	2020	2018	2019	2020
Number of Pupils / % Matched	24	29	29	96%	100%	97%
% Expected Standard + (Re, Wr, Ma)	58%	66%	62%	-7%	-3%	-5%
% Higher Standard (Re, Wr, Ma)	17%	14%	17%	+1%	+2%	-0%
% Expected Standard + Reading	83%	83%	79%	+6%	+4%	+1%
% Higher Standard Reading	29%	31%	38%	-1%	+6%	+6%
% Expected Standard + Writing	58%	69%	62%	-11%	-4%	-8%
% Higher Standard Writing	21%	17%	17%	-0%	+2%	-5%
% Expected Standard + Maths	71%	83%	72%	-8%	+3%	-6%
% Higher Standard Maths	21%	34%	28%	-5%	+12%	+1%

2020 self-evaluation reports have been calculated using the teacher assessments provided by schools as part of the FFT Results Service. ?

Meldreth Primary School

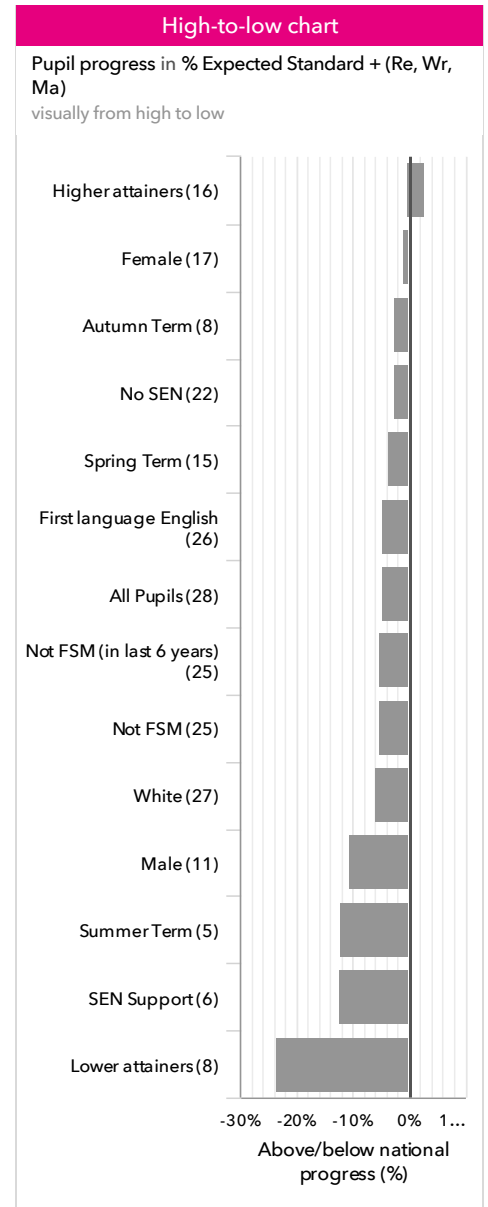
2020

KS1

## Pupil groups

### KS1 Pupil groups performance 2020

			Actual results		Pupil progress	
	Pupils		% Expected Standard + (Re, Wr, Ma)	% Higher Standard (Re, Wr, Ma)	% Expected Standard + (Re, Wr, Ma)	% Higher Standard (Re, Wr, Ma)
<b>Summary</b>	All Pupils	29	62%	17%	-5%	-0%
<b>Gender</b>	Male	12	42%	17%	-11%	+9%
	Female	17	76%	18%	-1%	-6%
<b>Prior Attainment</b>	Higher attainers	16	94%	31%	+3%	+1%
	Middle attainers	4	75%	0%	+3%	-4%
	Lower attainers	8	0%	0%	-24%	-0%
<b>Pupil Premium</b>	FSM (in last 6 years)	3	67%	0%	-1%	-25%
	Not FSM (in last 6 years)	26	62%	19%	-5%	+3%
<b>FSM</b>	FSM	3	67%	0%	-1%	-25%
	Not FSM	26	62%	19%	-5%	+3%
<b>Term of Birth</b>	Summer Term	5	60%	20%	-12%	+10%
	Spring Term	16	50%	13%	-3%	-1%
	Autumn Term	8	88%	25%	-3%	-5%
<b>SEN Group</b>	SEN Support	6	17%	0%	-12%	-2%
	No SEN	23	74%	22%	-3%	+0%
<b>EAL</b>	First language not English	2	50%	0%	-7%	-2%
	First language English	27	63%	19%	-5%	+0%
<b>Ethnicity</b>	White	28	61%	18%	-6%	+0%
	Any Other	1	100%	0%	+28%	-4%



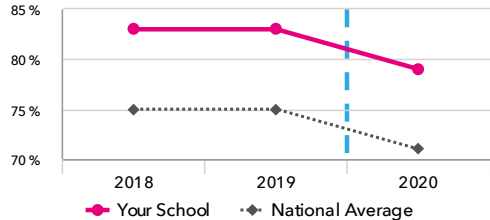
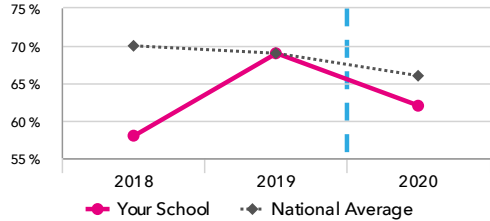
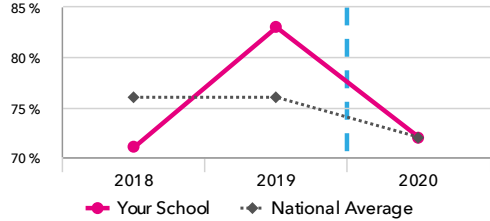
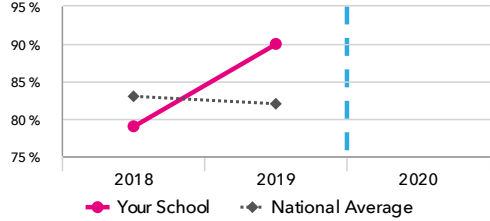
2020 self-evaluation reports have been calculated using the teacher assessments provided by schools as part of the FFT Results Service. ?

Meldreth Primary School

2020 KS1

# Subjects

## KS1 subject performance 2020

	Actual results			Pupil progress			Actual results over time
	2018	2019	2020	2018	2019	2020	
Number of Pupils / % Matched	24	29	29	96%	100%	97%	
Reading							% Expected Standard + Reading
% Expected Standard +	83%	83%	79%	+6%	+4%	+1%	
% Higher Standard	29%	31%	38% <span>+</span>	-1%	+6%	+6%	
Writing							% Expected Standard + Writing
% Expected Standard +	58%	69%	62%	-11%	-4%	-8%	
% Higher Standard	21%	17%	17%	-0%	+2%	-5%	
Maths							% Expected Standard + Maths
% Expected Standard +	71%	83%	72%	-8%	+3%	-6%	
% Higher Standard	21%	34%	28%	-5%	+12%	+1%	
Science							% Expected Standard + Science
% Expected Standard +	79%	90%	-	-	-	-	

2020 self-evaluation reports have been calculated using the teacher assessments provided by schools as part of the FFT Results Service. ?

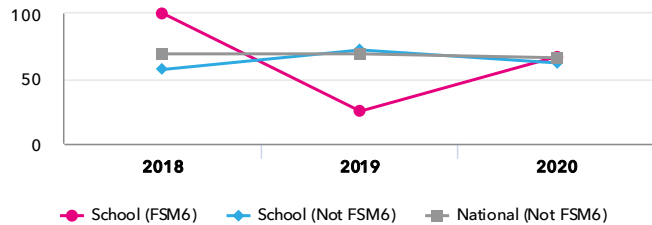
## Meldreth Primary School

2020 KS1

# Disadvantaged pupils

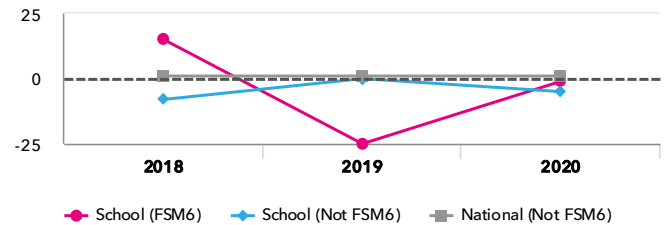
### KS1 attainment for disadvantaged pupils 2020

% Expected Standard + (Re, Wr, Ma)



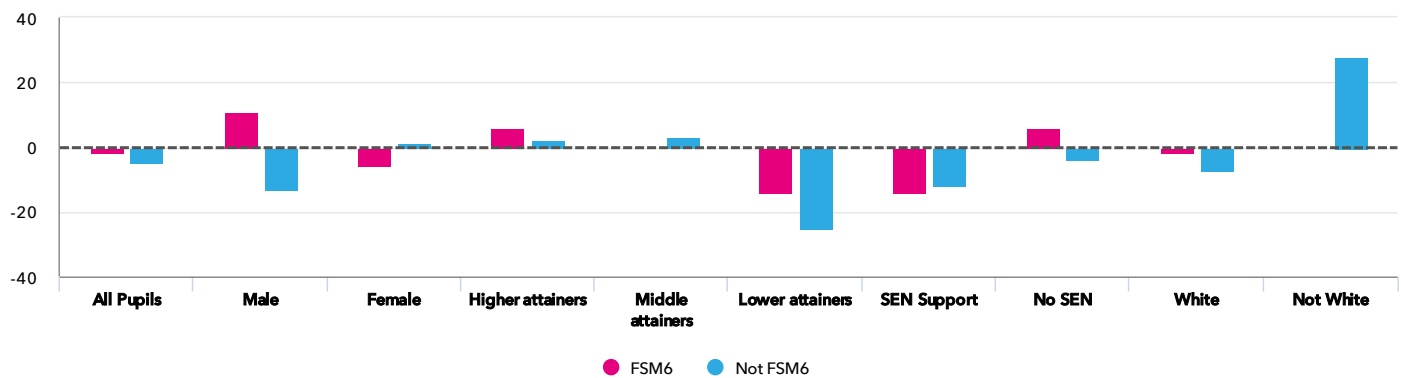
### KS1 progress for disadvantaged pupils 2020

% Expected Standard + (Re, Wr, Ma)



### Progress gap

% Expected Standard + (Re, Wr, Ma)



### Attainment & progress

Pupils				Attainment			Progress		
				% Expected Standard + (Re, Wr, Ma)			% Expected Standard + (Re, Wr, Ma)		
		FSM6	Not FSM6	FSM6	Not FSM6	Gap	FSM6	Not FSM6	Gap
Summary	All Pupils	3	26	67%	62%	5%	-1%	-5%	4%
Gender	Male	1	11	100%	36%	64%	11%	-13%	24%
	Female	2	15	50%	80%	-30%	-6%	0%	-6%
Prior Attainment	Higher attainers	2	14	100%	93%	7%	6%	2%	4%
	Middle attainers	-	4	-	75%	-	-	3%	-
	Lower attainers	1	7	0%	0%	0%	-14%	-25%	11%
SEN Group	SEN Support	1	5	0%	20%	-20%	-14%	-12%	-2%
	No SEN	2	21	100%	71%	29%	6%	-4%	10%
Ethnic Group	White	3	25	67%	60%	7%	-1%	-7%	6%
	Not White	-	1	-	100%	-	-	28%	-

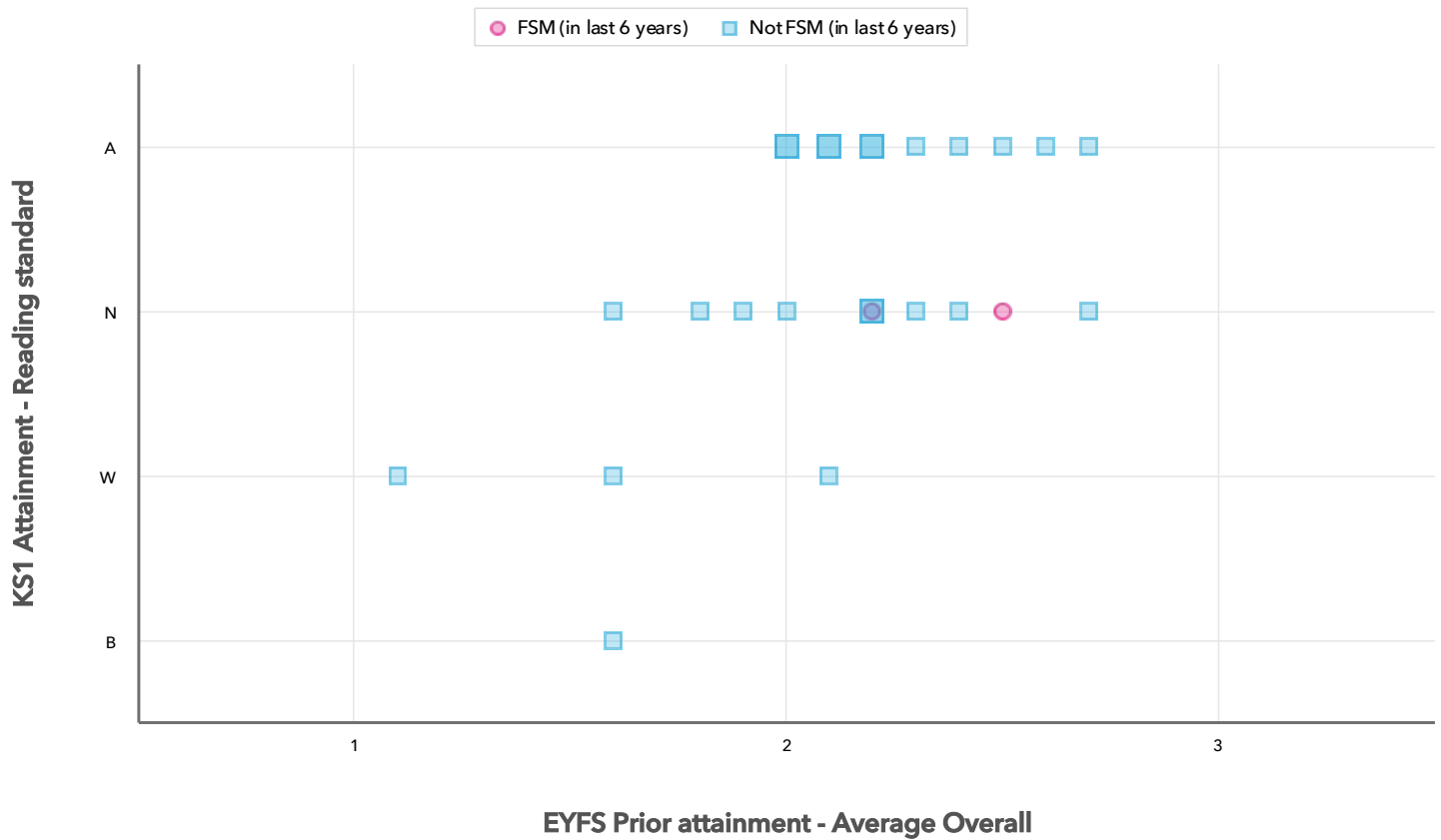
2020 self-evaluation reports have been calculated using the teacher assessments provided by schools as part of the FFT Results Service. ?

Meldreth Primary School

2020 KS1

## Scatterplot

KS1 Pupil scatterplot 2020 29 pupils highlighted by Pupil Premium ▼



Context data has been produced using either the data supplied by schools as part of the FFT 2020 Results Service or from the latest census data provided by the DfE. [?](#)

Meldreth Primary School

2020

KS1

## Context

### Context · Year 2

		Pupils	Comparative profile 2019 / 2020		Absence during Key Stage 1		Persistent absence during Key Stage 1	
		School	School	National	School	National	School	National
<b>Summary</b>	All Pupils	29	100%	100%	-	-	-	-
<b>Gender</b>	Male	12	41%	51%	-	-	-	-
	Female	17	59%	49%	-	-	-	-
<b>Prior Attainment</b>	Higher attainers	16	55%	33%	-	-	-	-
	Middle attainers	4	14%	35%	-	-	-	-
	Lower attainers	8	28%	28%	-	-	-	-
<b>Pupil Premium</b>	FSM (in last 6 years)	3	10%	24%	-	-	-	-
	Not FSM (in last 6 years)	26	90%	76%	-	-	-	-
<b>FSM</b>	FSM	3	10%	22%	-	-	-	-
	Not FSM	26	90%	77%	-	-	-	-
<b>Term of Birth</b>	Summer Term	5	17%	34%	-	-	-	-
	Spring Term	16	55%	32%	-	-	-	-
	Autumn Term	8	28%	34%	-	-	-	-
<b>SEN Group</b>	SEN Support	6	21%	13%	-	-	-	-
	No SEN	23	79%	85%	-	-	-	-
<b>EAL</b>	First language not English	2	7%	25%	-	-	-	-
	First language English	27	93%	74%	-	-	-	-
<b>Ethnicity</b>	White	28	97%	67%	-	-	-	-
	Any Other	1	3%	5%	-	-	-	-