



# EYFS LEARNING IN GEOGRAPHY KNOWLEDGE ORGANISER



## Overview

### Geography

-In Geography, we learn about the Earth and its people.

-We look at the different natural things that are found on Earth, for example rivers and mountains.

-We also look at how people live in different parts of the world.

In EYFS, we learn about the world and the people around us, (our 'familiar world')

Almost all of the early Geography learning can be found in 'Understanding the World', one of the 7 learning areas.



## Understanding the World

### Our World

-Our world is a planet called Earth. It is one of a number of planets that go around the Sun.

-On Earth, there are many different countries. In each country, there are cities, towns and villages.  
-Which country do you live in? Which town/city?



### Natural and Man-Made

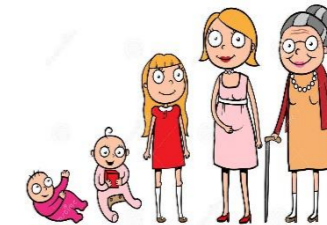
-Humans share the planet with lots of other things, including plants and animals, mountains, rivers, and oceans. None of these things are made by people. They are a part of nature – they are natural.

-There are also things that people have made in the world (man-made). Examples include buildings, cars, benches, tables, televisions, and toys!

### Changes over Time

-Humans go through life stages: baby, toddler, child, teenager, adult and old people.

-Other things change over time too. For example, they can grow, shrink, decay and die.



## Key Vocabulary

The World

Earth

People/ Humans

Animals

Plants

Nature

Man-made

Environment

Community

Tradition

## Understanding the World



### Living Things - Animals

Sub-Area: Natural World

-Animals are living things.  
-Animals get their food by eating plants or other animals. Animals can be big like elephants, or small like mice. We humans are animals!

Some animals you may see around you

Cats Dogs Rabbits Lizards Bees Flies  
Cows Horses Sheep Pigs Goats  
Chickens Pigeons Worms Beetles Badgers



### Living Things - Plants

Sub-Area: Natural World

-Plants are also living things.  
-Most plants do not eat other plants or animals for food. Plants can be big like trees, or small like weeds.

Some plants that you may see around you:

-Grass -Weeds -Trees -Bushes  
-Flowers -Stinging Nettles -Dandelions -Daisies



### The Seasons -

Sub-Area: Natural World

-The weather changes at different times in the year.  
-The four seasons are winter, spring, summer and autumn. It is coldest in the winter and warm in summer.  
-We can see different plants and animals in the different seasons.

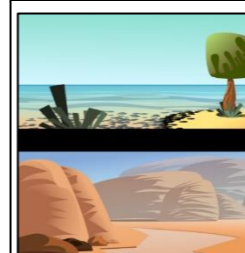
## Extended Learning



### Communities & Traditions

Sub-Area: People, Cultures and Communities

-A community is a group of people who live in a particular place or have something in common.  
-E.g. all of the teachers, parents and children at your school make up your school community.  
-Your town or village is your local community.  
-A tradition is something that people in a group or community do, that has been passed down over time.  
-E.g. eating certain foods, wearing certain clothes.



### Environments

Sub-Area: Natural World, People, Cultures and Communities

-Environments are our surroundings.  
-Different people, plants and animals like to live in different environments.  
-Some examples of natural environments are: garden, forest, beach, desert, rainforest, polar or mountain.

## Local Environments

My House



My Garden

My School

School Playground

The Park



The Village/ Town/ City

The River



The Beach

Hills and Mountains

The Forest

