

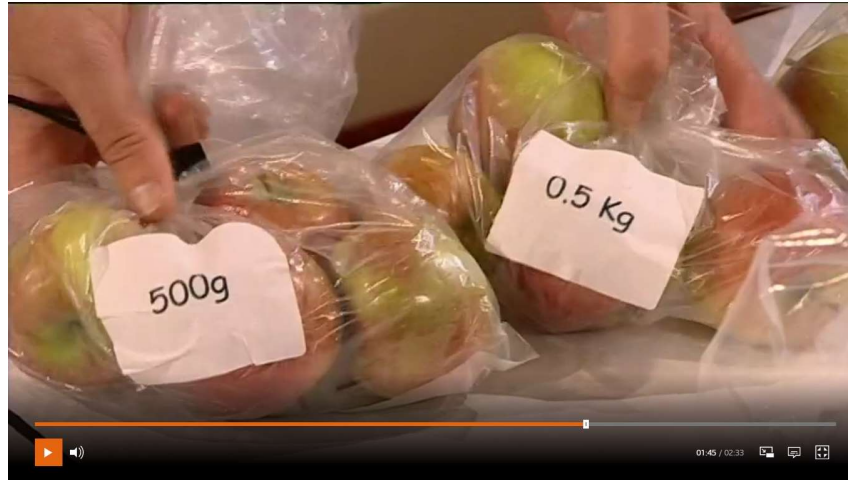
# OSPREY SIGNPOST 22

## LITERACY TASK

Turning Britain into Rome –  
Complete the task below to  
compare Londinium and  
London.

## CREATIVE TASK

Art/DT – Draw or build  
either Big Ben in London or  
the Colosseum in Rome.



Maths Task - Have a look at this maths clip about adding  
grams and kilograms:

<https://www.bbc.co.uk/bitesize/clips/zbvqkqt>

ICT Task - [https://www.google.co.uk/intl/en\\_uk/earth/](https://www.google.co.uk/intl/en_uk/earth/)  
<https://www.google.co.uk/maps/>

## MATHS TASK

Have a go at the kg  
addition questions below.  
Discuss the first challenge  
with your adult and then  
complete the sheet.

## ICT TASK

Find your house, the school,  
Big Ben and the Colosseum  
in Rome on google maps or  
google earth. (Remember to  
ask your adult's permission)



Please complete as many of the tasks as possible, however please try to put MORE into the task which appeals to you the most.

Upload your work to STARZ or ask a parent to email your work for Miss McGinty to mark.

Literacy – Compare and contrast geographic features throughout history.

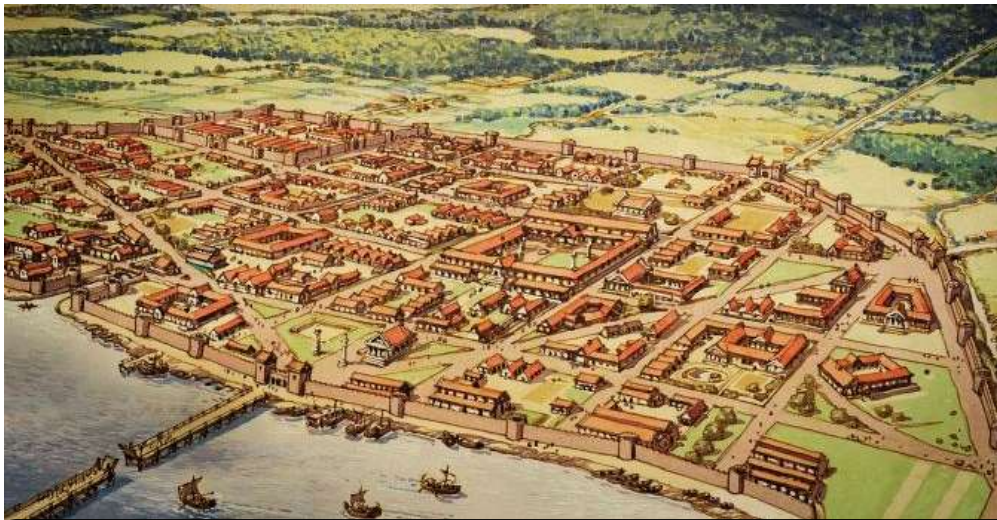
## Turning Britain into Rome

Londinium – Sound Familiar?

Around AD 50, the Romans built a small city called Londinium.

Does the name Londinium sound like a place name we use today?

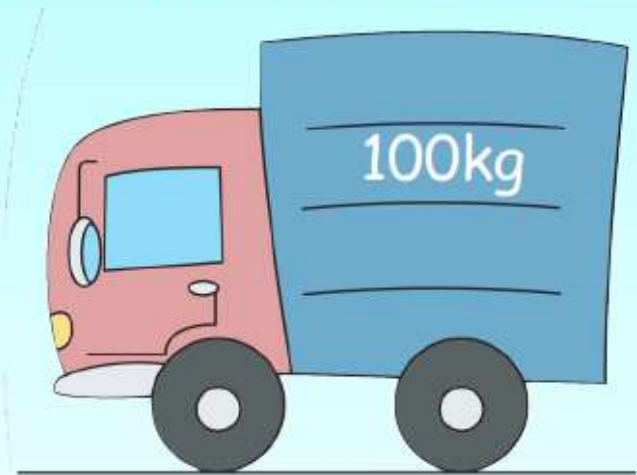
Look at the picture in the right of what Londinium might have looked like in Roman times, and the photo on the right of London today.



What similarities can you see between Londinium in Roman times and London today? What differences are there?

Maths – Use g and kg in addition problems.

This van can take a maximum of 100kg. Would the postman be able to put all these parcels in the van at once?



How can you work out the answer to this problem?

BACK

NEXT

**Maths** – Use g and kg in addition problems.

These vans can carry different weights. Pick out three parcels at a time and add the weights together. Which if the vans could the set of parcels travel in?



Weight of parcels	Total Weight	Which van?

The weights for you to choose from are on the following page.

