

# 2020 KS2 School Dashboard

## for governors & school leaders

Produce custom dashboards  
at [fftaspire.org](https://fftaspire.org)

### Meldreth Primary School

LA Cambridgeshire DfE 8732029 Produced August 2020 Version 1

#### What it is

Seven easy-to-use reports that help governors and school leaders to evaluate school performance using the latest 2019 DfE school performance indicators.

#### What it tells you

What are the strengths, areas for improvement and under-performing groups of pupils

How does attainment and pupil progress compare to the national average over the last three years?

How are you performing in different subjects?

#### Important for 2020

2020 data has been calculated using the teacher assessment data uploaded by schools who participated in the 2020 FFT Results Service. **The data is for internal use only and is NOT intended to be used for external accountability.**

With no test data available, this year's TA analysis should also be treated with additional care, especially when comparing to data from previous years. The 'national' comparator has been generated using the data supplied by participating schools. Please take this into account when analysing your school's data.

#### About the data shown

1 2 3

##### Actual results

Actual results for your school, using a range of measures such as averages and thresholds.



##### Gauges

These display headline indicators and whether actual results and pupils' progress are in line with, or significantly above or below, the national average.

ESTIMATED



1 2 3

##### Pupil progress

The value added progress that your pupils have made from one key stage to the next. FFT compares your actual results to the estimated results based on the progress of similar pupils nationally.



##### Statistical significance

Green plus signs and red minus signs highlight where either actual results or pupils' progress is significantly above or below the national average.



##### Trends

The dashboard analyses school performance over 3-5 years. Any significant year-on-year improvement is highlighted using an up arrow. Significant declines in performance are highlighted with a down arrow.



##### Strengths & weaknesses

These highlight key pupil groups and subjects where progress is above or below the national average.

#### Working in partnership with

Premier partner



National  
Governors'  
Association

#### Data sources

2020 data has been calculated using the teacher assessment data uploaded by schools who participated in the 2020 FFT Results Service.

2020 self-evaluation reports have been calculated using the teacher assessments provided by schools as part of the FFT Results Service. ?

Meldreth Primary School

2020 KS2

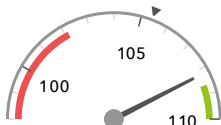
## Overview

### KS2 Attainment 2020 · Actual results

21 pupils

Average Scaled Score (Re, Ma)

108.2

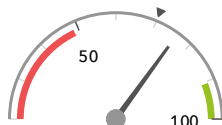


In line with the national average (105.4) ◀

% Expected standard+ (Re, Wr, Ma)

DFE

76%



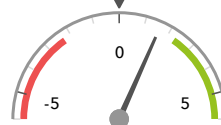
In line with the national average (70%) ◀

### KS2 Progress 2020 · Value Added

20 matched pupils

Average Scaled Score (Re, Ma)

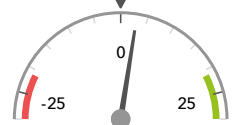
+1.6 ↑



In line with the national average (0) ◀

% Expected standard+ (Re, Wr, Ma)

+3%



In line with the national average (0%) ◀

### KS2 higher and lower performing pupil groups 2020

Minimum group size: 5

	Higher performing	Lower performing
<b>Overall achievement</b> pupil progress	Higher attainers (5) ↑ Female (6) ↑ Autumn Term (7)	
<b>KS2 reading achievement</b> pupil progress	Higher attainers (5) ↑ Female (6) Summer Term (7)	Middle attainers (11)
<b>KS2 writing achievement</b> pupil progress	Higher attainers (5) Female (6) Summer Term (7)	Middle attainers (11) Spring Term (6) Male (14)
<b>KS2 mathematics achievement</b> pupil progress	Autumn Term (7) Female (6) ↑ Higher attainers (5)	

2020 self-evaluation reports have been calculated using the teacher assessments provided by schools as part of the FFT Results Service. ?

Meldreth Primary School

2020 KS2

## Attainment & progress

### KS2 Attainment 2020

21 pupils

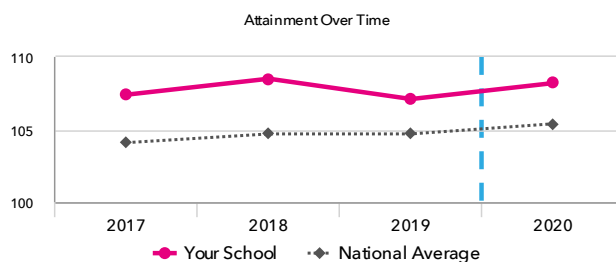
Average Scaled Score (Re, Ma)

108.2

FFT Rank



In line with the national average (105.4)



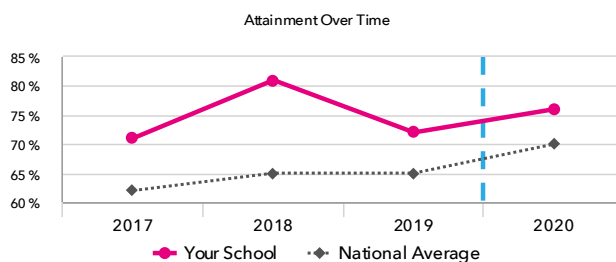
% Expected standard+ (Re, Wr, Ma) DfE

76%

FFT Rank



In line with the national average (70%)



### KS2 Progress 2020

20 matched pupils

Average Scaled Score (Re, Ma)

+1.6↑

FFT Rank



In line with the national average (0)

% Expected standard+ (Re, Wr, Ma)

+3%

FFT Rank



In line with the national average (0%)

### KS2 performance summary

	Actual results			Pupil progress		
	2018	2019	2020	2018	2019	2020
Number of Pupils / % Matched	21	29	21	100%	97%	95%
% Expected standard+ (Re, Wr, Ma)	81%	72%	76%	+9%	-10%	+3%
% Higher standard (Re, Wr, Ma)	24% +	17%	19%	+8%	-5%	-3%
Average Scaled Score (Re, GPS, Ma)	109.5 +	107.5	108.5	+3.1 +	-0.7 ↓	+1.5 ↑
Average Scaled Score (Re, Ma)	108.5 +	107.1	108.2	+2.4 +	-0.7 ↓	+1.6 ↑
% Expected standard+ Reading	81%	79%	90%	-2%	-8%	+8%
% Higher standard Reading	48%	34%	48%	+8%	-7%	+9%
Scaled Score Reading	108.0	104.7	107.6	+1.5	-2.9 ↓	+0.9 ↑
% Expected standard+ Writing	86%	86%	76%	+0%	-4%	-3%
% Higher standard Writing	24%	24%	24%	-8%	-11%	-4%
Scaled Score Writing	103.1	102.8	106.0	-0.7	-2.5 ↓	-1.0
% Expected standard+ Maths	95%	97% +	100% +	+15%	+5%	+19% +
% Higher standard Maths	57% +	52% +	33%	+26% +	+3%	-2%
Scaled Score Maths	109.0 +	109.4 +	108.9 +	+3.4 +	+1.4	+2.4
% Expected standard+ Grammar, Punctuation & Spelling	95%	83%	86%	+10%	-8%	+3%
% Higher standard Grammar, Punctuation & Spelling	62% +	38%	38%	+14%	-15% ↓	-0%
Scaled Score Grammar, Punctuation & Spelling	111.8 +	106.6 ↓	108.8	+4.1 +	-3.0 ↓	+0.4 ↑
% Expected standard+ Science	90%	97%	-	-	-	-

2020 self-evaluation reports have been calculated using the teacher assessments provided by schools as part of the FFT Results Service. ?

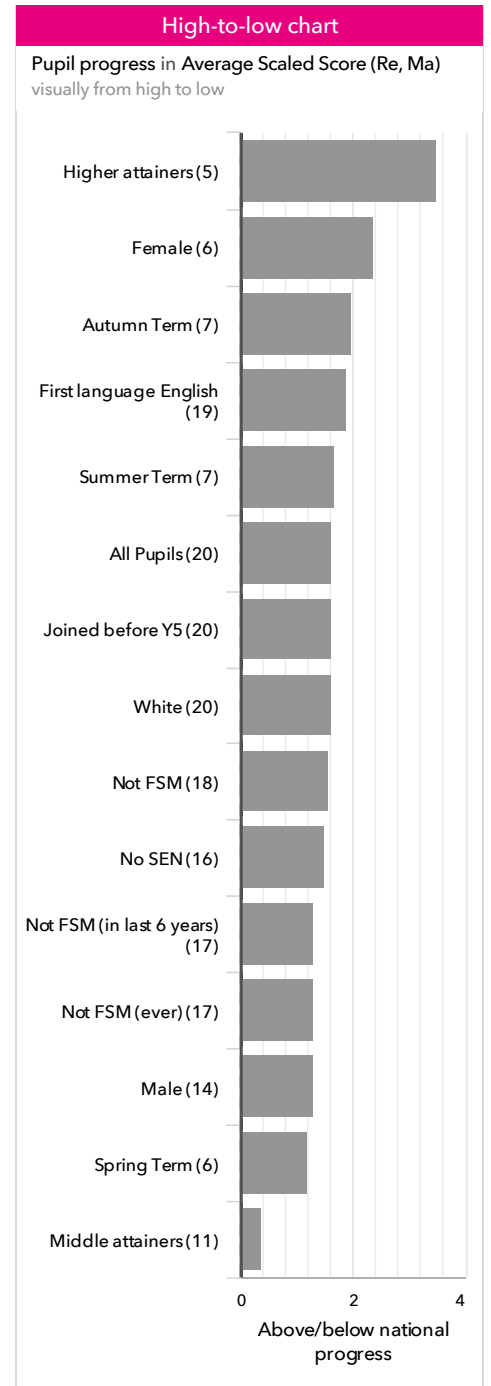
## Meldreth Primary School

2020 KS2

# Pupil groups

## KS2 Pupil groups performance 2020

		Pupils	Actual results			Pupil progress		
			Average Scaled Score (Re, Ma)	% Expected standard+ (Re, Wr, Ma) <small>DFE</small>	% Higher standard (Re, Wr, Ma) <small>DFE</small>	Average Scaled Score (Re, Ma)	% Expected standard+ (Re, Wr, Ma)	% Higher standard (Re, Wr, Ma)
<b>Summary</b>	All Pupils	21	108.2	76%	19%	+1.6 ↑	+3%	-3%
<b>Gender</b>	Male	15	107.8	73%	13%	+1.3	+1%	-5%
	Female	6	109.3	83%	33%	+2.4 ↑	+10%	-0%
<b>FFT Prior Attainment</b>	Higher attainers	5	115.8 ↑	100%	60%	+3.5 ↑	+2%	+6%
	Middle attainers	11	106.5 ↑	73%	0%	+0.4	-3%	-8%
	Lower attainers	4	101.1	50%	0%	+2.8	+23%	-0%
<b>Pupil Premium</b>	FSM (in last 6 years)	3	104.7	67%	0%	+3.5	+22%	-3%
	Not FSM (in last 6 years)	18	108.8	78%	22%	+1.3	-0%	-3%
<b>FSM</b>	FSM	2	104.8	50%	0%	+2.1	-5%	-5%
	Not FSM	19	108.6	79%	21%	+1.6 ↑	+4%	-3%
<b>FSM Ever</b>	FSM (ever)	3	104.7	67%	0%	+3.5	+22%	-3%
	Not FSM (ever)	18	108.8	78%	22%	+1.3	-0%	-3%
<b>Term of Birth</b>	Autumn Term	7	109.8	86%	43%	+2.0	+6%	+16%
	Spring Term	7	106.8	57%	14%	+1.2	-5%	-13%
	Summer Term	7	108.1	86%	0%	+1.7	+8%	-14%
<b>SEN Group</b>	SEN Support	4	105.6	50%	0%	+2.2	-7%	-8%
	No SEN	17	108.9	82%	24%	+1.5	+6%	-2%
<b>EAL</b>	First language not English	1	103.5	100%	0%	-3.4	+17%	-7%
	First language English	20	108.5	75%	20%	+1.9 ↑	+3%	-3%
<b>Mobility</b>	Joined in Y5 or Y6	1	117.5	100%	100%	-	-	-
	Joined before Y5	20	107.8	75%	15%	+1.6 ↑	+3%	-3%
<b>Ethnicity</b>	White	21	108.2	76%	19%	+1.6 ↑	+3%	-3%



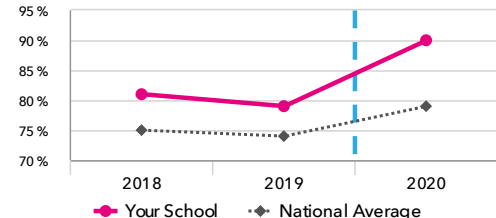
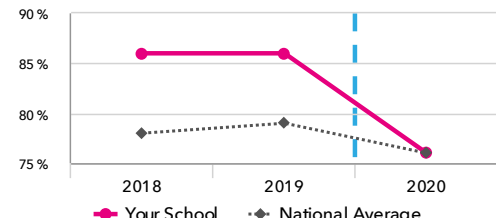
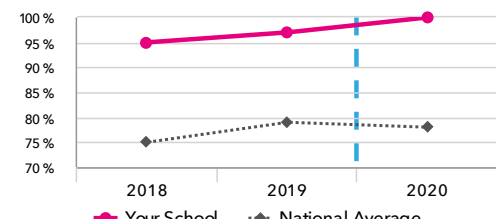
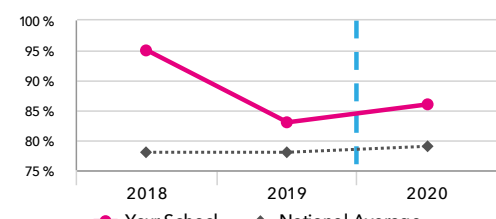
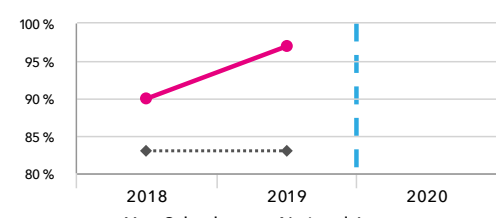
2020 self-evaluation reports have been calculated using the teacher assessments provided by schools as part of the FFT Results Service. ?

## Meldreth Primary School

2020 KS2

# Subjects

## KS2 subject performance 2020

	Actual results			Pupil progress			Actual results over time	
	2018	2019	2020	2018	2019	2020		
Number of Pupils / % Matched	21	29	21	100%	97%	95%		
<b>Reading</b>								
% Expected standard+	81%	79%	90%	-2%	-8%	+8%		
% Higher standard	48%	34%	48%	+8%	-7%	+9%		
Scaled Score	108	105	108	+1.5	-2.9	+0.9		
<b>Writing</b>								
% Expected standard+	86%	86%	76%	+0%	-4%	-3%		
% Higher standard	24%	24%	24%	-8%	-11%	-4%		
Scaled Score	103	103	106	-0.7	-2.5	-1.0		
<b>Maths</b>								
% Expected standard+	95%	97%	100%	+15%	+5%	+19%		
% Higher standard	57%	52%	33%	+26%	+3%	-2%		
Scaled Score	109	109	109	+3.4	+1.4	+2.4		
<b>Grammar, Punctuation &amp; Spelling</b>								
% Expected standard+	95%	83%	86%	+10%	-8%	+3%		
% Higher standard	62%	38%	38%	+14%	-15%	-0%		
Scaled Score	112	107	109	+4.1	-3.0	+0.4		
<b>Science</b>								
% Expected standard+	90%	97%	-	-	-	-		

2020 self-evaluation reports have been calculated using the teacher assessments provided by schools as part of the FFT Results Service. ?

## Meldreth Primary School

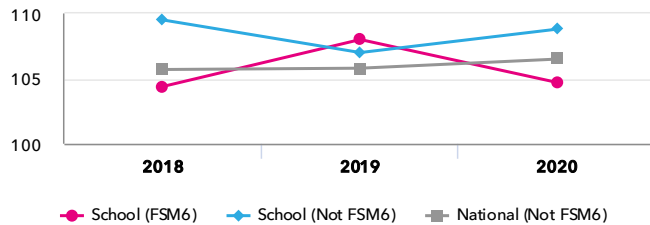
2020

KS2

# Disadvantaged pupils

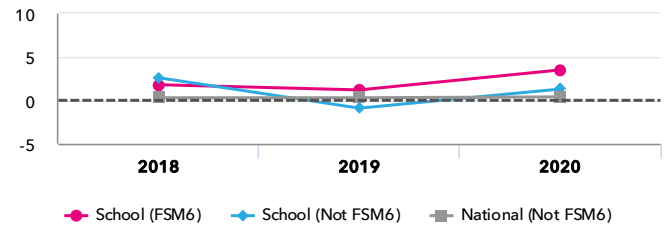
### KS2 attainment for disadvantaged pupils 2020

Average Scaled Score (Re, Ma)



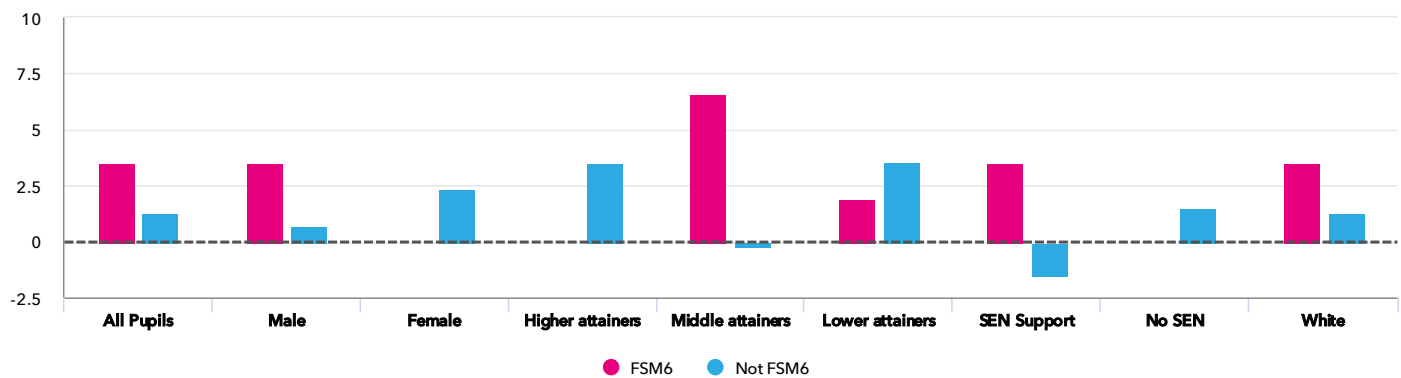
### KS2 progress for disadvantaged pupils 2020

Average Scaled Score (Re, Ma)



### Progress gap

Average Scaled Score (Re, Ma)



### Attainment & progress

Pupils				Attainment			Progress		
				Average Scaled Score (Re, Ma)			Average Scaled Score (Re, Ma)		
		FSM6	Not FSM6	FSM6	Not FSM6	Gap	FSM6	Not FSM6	Gap
Summary	All Pupils	3	18	104.7	108.8	-4.1	3.5	1.3	2.2
Gender	Male	3	12	104.7	108.6	-3.9	3.5	0.7	2.8
	Female	-	6	-	109.3	-	-	2.4	-
FFT Prior Attainment	Higher attainers	-	5	-	115.8	-	-	3.5	-
	Middle attainers	1	10	113.5	105.9	7.6	6.6	-0.2	6.8
	Lower attainers	2	2	100.3	102	-1.7	1.9	3.6	-1.7
SEN Group	SEN Support	3	1	104.7	108.5	-3.8	3.5	-1.5	5
	No SEN	-	17	-	108.9	-	-	1.5	-
Ethnic Group	White	3	18	104.7	108.8	-4.1	3.5	1.3	2.2

2020 self-evaluation reports have been calculated using the teacher assessments provided by schools as part of the FFT Results Service. ?

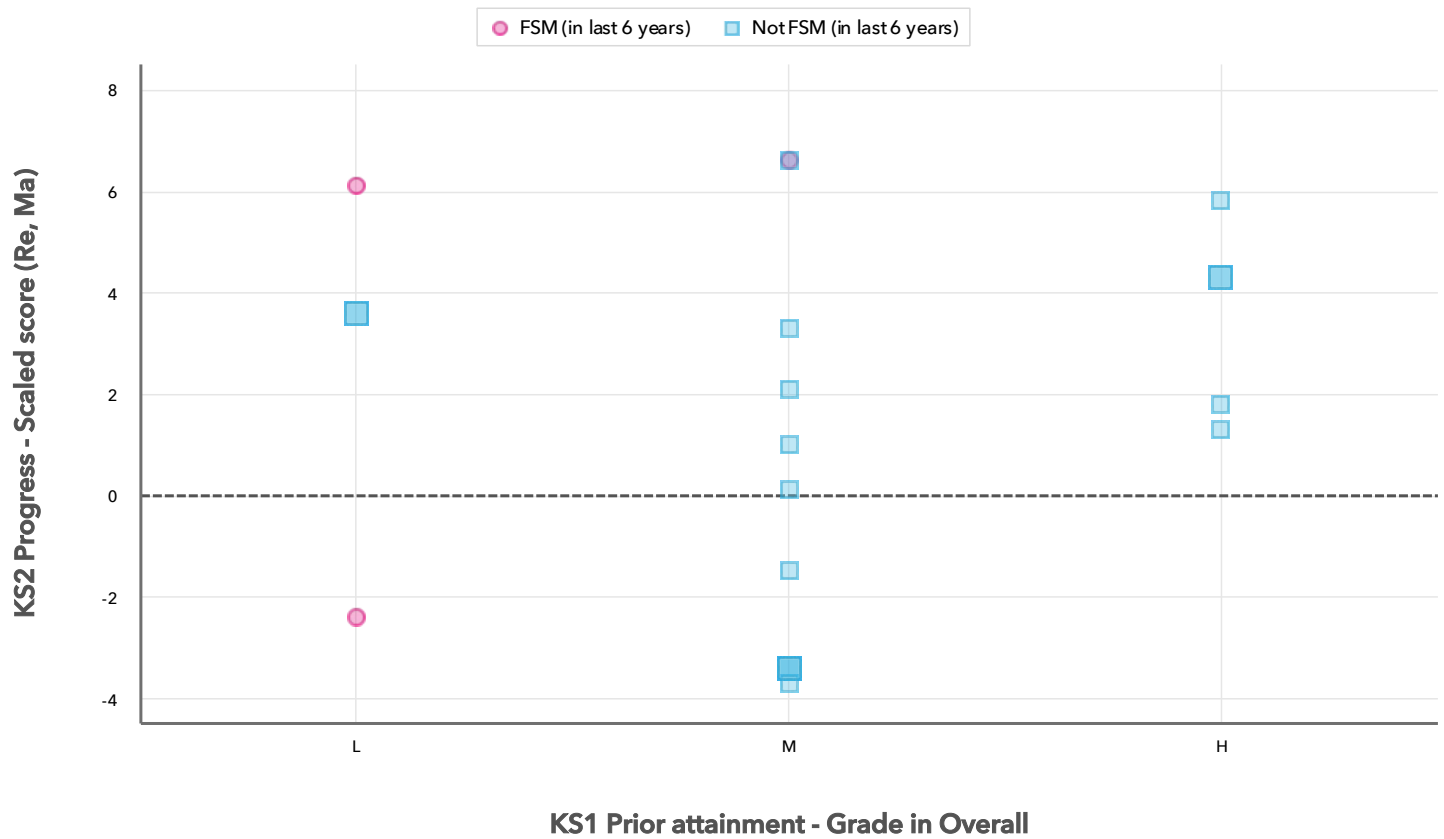
Meldreth Primary School

2020

KS2

## Scatterplot

KS2 Pupil scatterplot 2020 21 pupils highlighted by Pupil Premium ▼



Context data has been produced using either the data supplied by schools as part of the FFT 2020 Results Service or from the latest census data provided by the DfE. [?](#)

Meldreth Primary School

2020

KS2

## Context

### Context · Year 6

		Pupils	Comparative profile 2019 / 2020		Absence during Key Stage 2		Persistent absence during Key Stage 2	
		School	School	National	School	National	School	National
<b>Summary</b>	All Pupils	21	100%	100%	-	-	-	-
<b>Gender</b>	Male	15	71%	51%	-	-	-	-
	Female	6	29%	49%	-	-	-	-
<b>FFT Prior Attainment</b>	Higher attainers	5	24%	15%	-	-	-	-
	Middle attainers	11	52%	61%	-	-	-	-
	Lower attainers	4	19%	19%	-	-	-	-
<b>Pupil Premium</b>	FSM (in last 6 years)	3	14%	30%	-	-	-	-
	Not FSM (in last 6 years)	18	86%	70%	-	-	-	-
<b>FSM</b>	FSM	2	10%	21%	-	-	-	-
	Not FSM	19	90%	78%	-	-	-	-
<b>FSM Ever</b>	FSM (ever)	3	14%	30%	-	-	-	-
	Not FSM (ever)	18	86%	69%	-	-	-	-
<b>Term of Birth</b>	Autumn Term	7	33%	34%	-	-	-	-
	Spring Term	7	33%	32%	-	-	-	-
	Summer Term	7	33%	34%	-	-	-	-
<b>SEN Group</b>	SEN Support	4	19%	15%	-	-	-	-
	No SEN	17	81%	82%	-	-	-	-
<b>EAL</b>	First language not English	1	5%	25%	-	-	-	-
	First language English	20	95%	74%	-	-	-	-
<b>Mobility</b>	Joined in Y5 or Y6	1	5%	7%	-	-	-	-
	Joined before Y5	20	95%	93%	-	-	-	-
<b>Ethnicity</b>	White	21	100%	69%	-	-	-	-