

The Mystery of the Snaffled Scarecrows

It's September and the whole village of Netherwallop is full of anticipation of the judging of the annual Scarecrow Festival.

Every house in the village has displayed a scarecrow all befitting this year's theme of superheroes.

Cut to the morning of the judging and half of the Scarecrows in the village had gone missing...stolen! But by whom?

You are the chief detective in charge of the case. Along with the Scenes of Crime Officers (SOCOs), you need to find the culprit as soon as possible. The judging has been postponed until tomorrow, so you have just one day to find the scarecrows.

Solve the following clues to whittle down the suspects to find the Scarecrow Snaffler!



The Mystery of the Snaffled Scarecrows

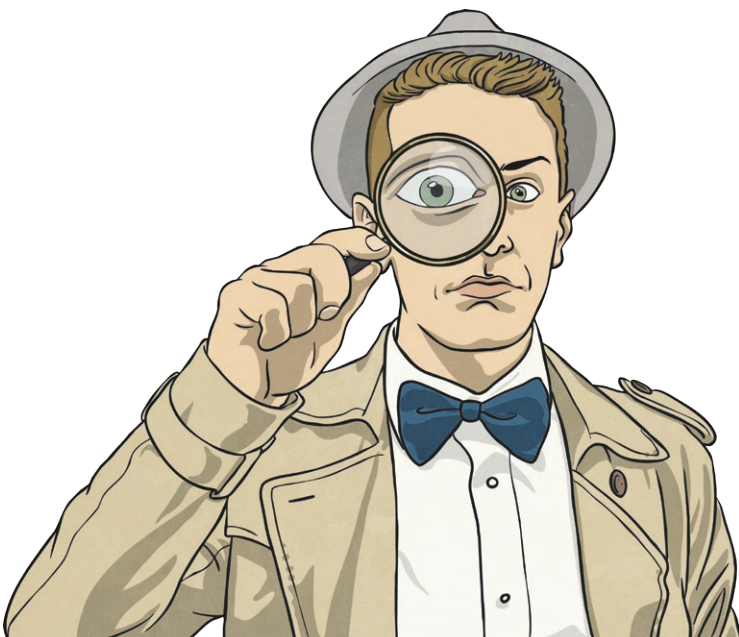
Name	M/F	Scarecrow Superhero	Type of House	House Number	Vehicle
Anthea Autumn	F	Aquagirl	Semi	5	Car
Alun Avantasia	M	Amaze-man	Detached	19	Van
Bekka Bagiau-Bach	F	Batgirl	Terrace	32	4x4
Bob Barleycorn	M	Bailerman	Detached	2	Bike
Cliff Crop	M	Captain Cornman	Bungalow	75	Truck
Clarissa Corn	F	Caped Combine	Semi	18	Van
Dora Dingle	F	Dangerwoman	Flat	8	Truck
Didj Dangle	M	Doctor Daredevil	Terrace	102	Car
Espantalho	M	Elektra Ears	Detached	22	Car
Eilish Épouvantail	F	Elevationman	Bungalow	4	4x4
Flo Fugleskremsel	F	Flying Farmer	Terrace	79	Bike
Finn Feathertop	M	Fieldgirl	Flat	50	Truck
Greta Gummidge	F	G-flounce	Semi	6	Van
Gallybagger	M	Gravity Giant	Flat	44	Car
Hasan Hodmedod	M	Hawk-eyeman	Detached	55	4x4
Harriet Harvest	F	The Hay Bailer	Bungalow	1	Truck
Ike If-I-only-had-a-brain	M	Invisible Woman	Terrace	61	Van
Ivanna Irrigation	F	Invincible Hayman	Terrace	33	Car
Janet Jumper	F	Jugger-n-oat	Detached	64	Bike
Jamal Jacket	M	James Pond	Semi	9	4x4
Kiki Kakashi	F	Kingorilla	Flat	29	Truck
Kye Korkuluk	M	Krypto-knight	Terrace	27	4x4
Lorenzo Landrover	M	Lightning	Detached	3	Car
Lena Landgirl	F	Leaping Crow	Terrace	67	Truck
Melanie Mawkin	F	Mr Magicstraw	Bungalow	49	Van
Marco Murmet	M	Mrs Mannequin	Semi	76	Bike
Noah Nagoro	M	Nightwatchman	Semi	7	Car
Nora Norland	F	Nebulawoman	Flat	30	Car
Olive Opuldalo	F	Osiris O'Crow	Terrace	91	4x4
Olibhear Oz	M	Odin Oats	Detached	10	Bike
Peter Pumpkin	M	Plunderwoman	Bungalow	69	Car
Paula Pole	F	Professor Plump	Semi	112	Van

Clue 1

The SOCOs have found some chewing gum dropped by the snaffler from which they were able to determine something about the thief. To solve the clue, begin in the start box and follow the directions given. Make sure you start the next direction from where you finish the last one.

m	u	e	p	t
o	r	h	c	k
b	y	start	f	a
i	l	v	w	n
g	s	j	p	d

NE1	
S3, W2, N4	
SW1, S1, SE1	
E2, N3	
W3, SE1	
S1, SW1	
NE3, E1	
SW3, W1	
SE1	
N4, W1	
SE4, N2	
W2, SW1	
NE2, NW1	



Clue 2

You have looked at the layout of the village and the possible routes taken by each suspect. You have discovered something about where the criminal lives. Solve the clue and crack the code at the bottom to find the answer.

Algebraic Expressions
$14 \div 2 = b$
$d = \frac{1}{3} \text{ of } 27$
$b + d = e$
$\frac{e}{2} = f$
$h = \sqrt{36}$
$i = 0.05 \times 100$
$m = 300 \div 100$
$im = n$
$e - h = o$
$m(o-h) = r$
$r - o = s$
$2b = t$
$\sqrt{e} = u$
$(u+h) - m^2 = v$
$s^3 + i = y$

Answers
$b =$
$d =$
$e =$
$f =$
$h =$
$i =$
$m =$
$n =$
$o =$
$r =$
$s =$
$t =$
$u =$
$v =$
$y =$

Clue:

6, 10, 4, 2, 16, 15, 4, 3, 7, 16, 12, 10, 1, 16, 12, 8, 5, 8, 14, 13



Clue 3

After further investigation into where the culprit might live, you have been able to eliminate a certain area of the village. Solve the clue by finding the answers to the clues below in the word search. When finished, the unused letters will spell out your clue.

H	E	M	I	S	P	H	E	R	E
A	E	R	A	F	D	N	O	L	B
T	A	P	O	N	E	T	G	S	U
A	C	U	T	E	C	N	E	U	C
X	R	R	R	A	A	A	C	I	O
E	T	I	K	T	G	E	D	D	B
L	H	O	H	U	O	O	S	A	T
F	E	G	C	O	N	E	N	R	U
E	I	S	O	S	C	E	L	E	S
R	E	C	T	A	N	G	L	E	E

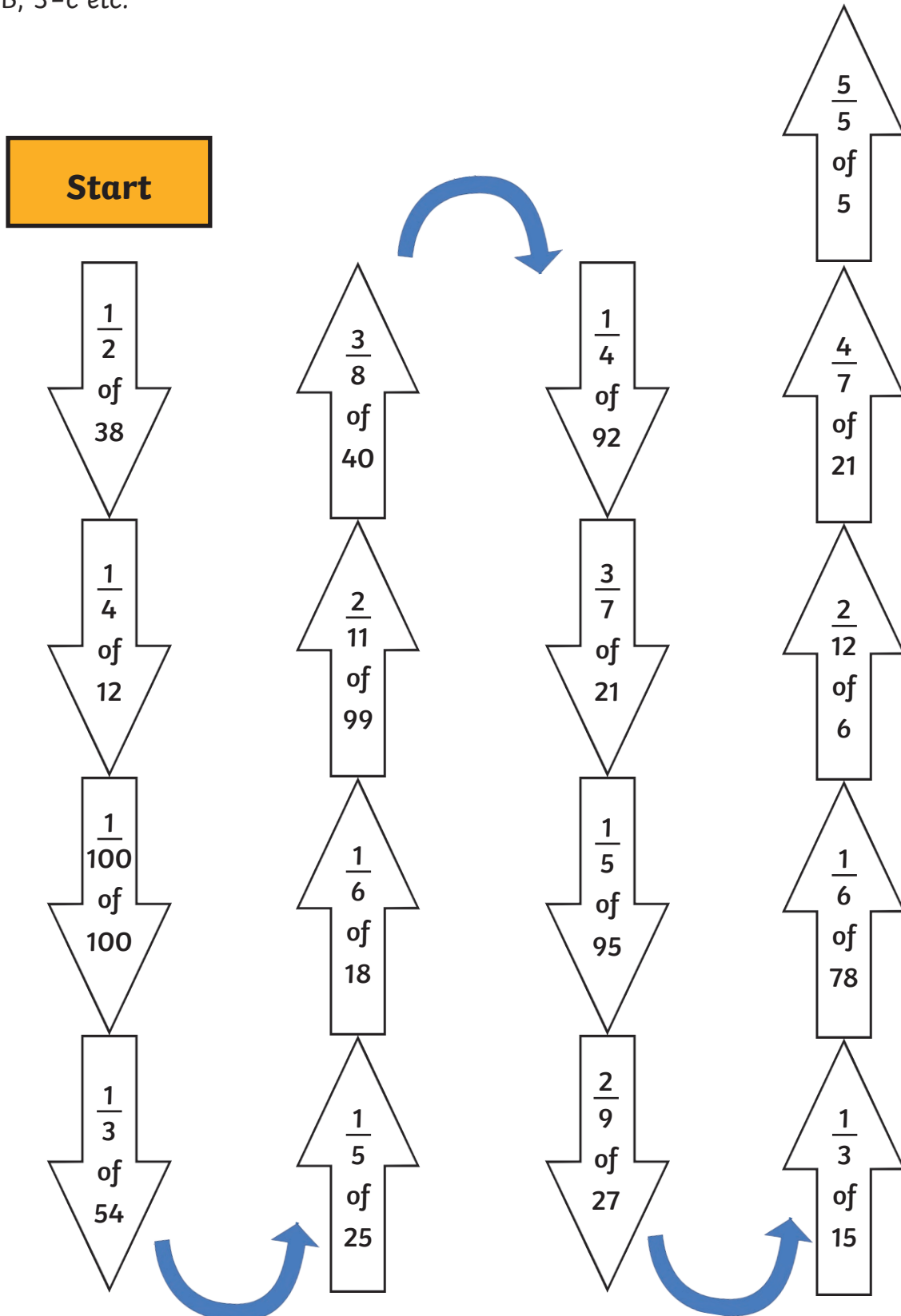


- Number of sides on a quadrilateral.
- The space inside a perimeter.
- A 7-sided 2D shape.
- A 10-sided 2D shape.
- 90° (two words)
- A triangle with 2 sides with the same length.
- Half a sphere.
- A quadrilateral with opposite sides that are parallel and of equal length with four right angles.
- Number of curved surfaces on a sphere.

- The shape of a 6-sided dice.
- The measurement from the middle of a circle to the edge.
- An angle less than 90°.
- An angle more than 180°.
- A 3D shape with a circular base and one curved surface.
- An angle of more than 90° but less than 180°.
- A quadrilateral with two pairs of equal adjacent sides with only one line of symmetry.

Clue 4

The SOCOs have found a scrap of a scarecrow festival entry form at the scene of the crime which reveals something about the snaffler's own scarecrow. Follow this trail; each answer will give you a number. Use the numbers to spell out the answer to the clue using the code 1=A, 2=B, 3=C etc.



Clue 5

The SOCOs have found tyre tracks which follow a pattern around the village visiting each house with a stolen scarecrow. This will help you identify the vehicle owned by the culprit. Solve the clue by finding the incorrect digits in each answer. Those digits will make a number and give you a letter using the code 1=A, 2=B 3=C etc.

They will eventually spell out the answer to the clue.

$$\begin{array}{r} 1. \quad \quad \quad 9 \ 7 \\ + \quad \quad 3 \ 2 \\ \hline \quad \quad 1 \ 1 \ 8 \end{array}$$

$$\begin{array}{r} 6. \quad \quad \quad 5 \ 1 \ 1 \\ \times \quad \quad \quad 2 \\ \hline \quad \quad 1 \ 1 \ 2 \ 2 \end{array}$$

$$\begin{array}{r} 2. \quad \quad 1 \ 1 \ 9 \ 7 \\ - \quad \quad 3 \ 9 \ 4 \\ \hline \quad \quad 9 \ 0 \ 3 \end{array}$$

$$\begin{array}{r} 7. \quad \quad 1 \ 0 \ 0 \ 0 \\ - \quad \quad 9 \ 5 \ 1 \\ \hline \quad \quad 4 \ 2 \end{array}$$

$$\begin{array}{r} 3. \quad \quad 2 \ 1 \ 4 \\ \times \quad \quad \quad 3 \\ \hline \quad \quad 4 \ 4 \ 2 \end{array}$$

$$\begin{array}{r} 8. \quad \quad 3 \ 0 \ 0 \ 0 \\ - \quad \quad 1 \ 9 \ 8 \ 2 \\ \hline \quad \quad 1 \ 0 \ 1 \ 9 \end{array}$$

$$\begin{array}{r} 4. \quad \quad \quad 2 \ 7 \\ \times \quad \quad \quad 4 \\ \hline \quad \quad 1 \ 0 \ 5 \end{array}$$

$$\begin{array}{r} 9. \quad \quad \quad 2 \ 2 \ 0 \\ \times \quad \quad \quad 5 \\ \hline \quad \quad 1 \ 1 \ 1 \ 1 \end{array}$$

$$\begin{array}{r} 5. \quad \quad 1 \ 8 \ 9 \\ + \quad 1 \ 2 \ 8 \ 2 \\ \hline \quad 1 \ 1 \ 9 \ 1 \end{array}$$

$$\begin{array}{r} 5. \quad \quad \quad 2 \ 5 \\ 5 \overline{) 1 \ 0 \ 0} \end{array}$$



The culprit is _____

The Confession

When the culprit was finally caught, the scarecrows were found all together hung in the air like they were flying (like superheroes should). Once they were all safely back in their original places, they had this to say...

x	12	9	7	3	20	6	8	4	30	5
10	O	M	@	R	Q	V	N	A	L)
5	V	F	:	C	#	R	A	(@	=
4	B	E	G	-	N	H	D	W	O	+
7	"	!	Z	I	\	S	.	G	\$:
9	U	[!	O	T	!	Y	E	<	F
100	K	/	£	L	&	J	%	>	P	'
3	E	I	I	~	V	,	H	-	M	C
8]	Y	.	H	*	B	X	D	?	A
12	'	U	"	E	?	Y	"	B	;	V
6	Y	E	S	,	O	E	B	H	T	R



180	24	36	45	300	72	21	80	28

42	15	40	30	36	15	30	120	16	42

24	40	32	40	48	40	32

500	40	300	180	21	180	108	32	36	144	63

The Mystery of the Snaffled Scarecrows - Answers

Clue 1:

culprit is male.

Clue 2:

House number over fifty.

Answers
b = 7
d = 9
e = 16
f = 8
h = 6
i = 5
m = 3
n = 15
o = 10
r = 12
s = 2
t = 14
u = 4
v = 1
y = 13

Clue 3:

Not a terraced house

H	E	M	I	S	P	H	E	R	E
A	E	R	A	F	D	N	O	L	B
T	A	P	O	N	E	T	G	S	U
A	C	U	T	E	C	N	E	U	C
X	R	R	R	A	A	A	C	I	O
E	T	I	K	T	G	E	D	D	B
L	H	O	H	U	O	O	S	A	T
F	E	G	C	O	N	E	N	R	U
E	I	S	O	S	C	E	L	E	S
R	E	C	T	A	N	G	L	E	E

The Mystery of the Snaffled Scarecrows - Answers

Clue 4:

Scarecrow is female.

Clue 5:

Rides a bike.

$$\begin{array}{r} 1. \quad \quad 9 \ 7 \\ + \quad 3 \ 2 \\ \hline \quad 1 \ 1 \ 8 \end{array}$$

$$\begin{array}{r} 6. \quad \quad 5 \ 1 \ 1 \\ \times \quad \quad \quad 2 \\ \hline \quad 1 \ 1 \ 2 \ 2 \end{array}$$

$$\begin{array}{r} 2. \quad 1 \ 1 \ 9 \ 7 \\ - \quad 3 \ 9 \ 4 \\ \hline \quad 9 \ 0 \ 3 \end{array}$$

$$\begin{array}{r} 7. \quad 1 \ 0 \ 0 \ 0 \\ - \quad 9 \ 5 \ 1 \\ \hline \quad \quad 4 \ 2 \end{array}$$

$$\begin{array}{r} 3. \quad \quad 2 \ 1 \ 4 \\ \times \quad \quad \quad 3 \\ \hline \quad 4 \ 4 \ 2 \end{array}$$

$$\begin{array}{r} 8. \quad 3 \ 0 \ 0 \ 0 \\ - \quad 1 \ 9 \ 8 \ 2 \\ \hline \quad 1 \ 0 \ 1 \ 9 \end{array}$$

$$\begin{array}{r} 4. \quad \quad 2 \ 7 \\ \times \quad \quad \quad 4 \\ \hline \quad 1 \ 0 \ 5 \end{array}$$

$$\begin{array}{r} 9. \quad \quad 2 \ 2 \ 0 \\ \times \quad \quad \quad 5 \\ \hline \quad 1 \ 1 \ 1 \ 1 \end{array}$$

$$\begin{array}{r} 5. \quad \quad 1 \ 8 \ 9 \\ + \quad 1 \ 2 \ 8 \ 2 \\ \hline \quad 1 \ 1 \ 9 \ 1 \end{array}$$

$$\begin{array}{r} 5. \quad \quad \quad 2 \ 5 \\ 5 \overline{) 1 \ 0 \ 0} \end{array}$$

The Culprit:

Marco Murmet

The Confession:

The flying scarecrows had a bad 'altitude'!