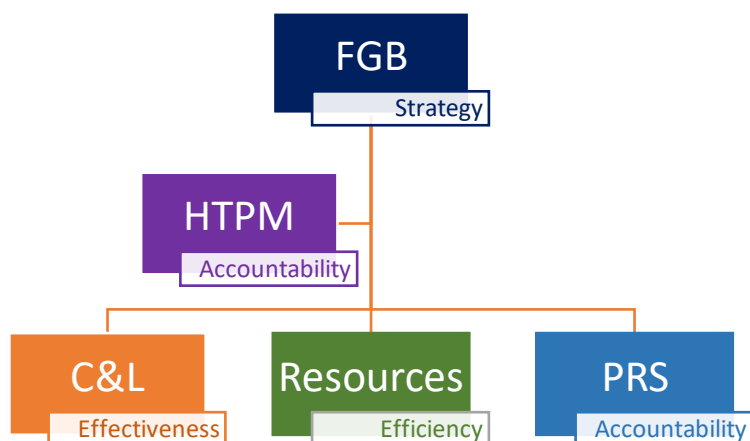


# MPS GB Committee Structure 2021-2022



## Membership

Name	Category of Governor	Term of Office
Sasha Howard	Head Teacher	Commensurate with Headship
Emma Tidby (Chair)	Co-opted	Oct 2018 – Oct 2022
Neil O'Regan	Co-opted	Mar 2021 – Mar 2025
Dianne Dow	Co-opted	Sept 2019 – Sept 2023
Janet Williams	Co-opted	Nov 2017 – Nov 2021
Matthew Paradis	Co-opted	Dec 2020 – Dec 2024
Vacancy	Co-opted	
Clare Yelton	Parent	Nov 2017 - Nov 2021
Joanne Faires	Parent	Jul 2021 – Jul 2025
Claudia McGinty	Staff	Oct 2019 – Oct 2023
James Bridges (Vice-Chair)	Local Authority	Jan 2020 – Jan 2024

### HTPM

- Emma Tidby
- Neil O'Regan
- Joanne Faires

### Pay Review and Salaries

- Neil O'Regan (Chair)
- Emma Tidby
- James Bridges
- Janet Williams

### Children & Learning Committee

- Matthew Paradis (Chair)
- Neil O'Regan (Vice-Chair)
- Sasha Howard
- Emma Tidby
- Claudia McGinty (Staff)

### Resources Committee

- Janet Williams (Chair)
- Dianne Dow (Vice-Chair)
- Sasha Howard
- Emma Tidby
- Clare Yelton
- James Bridges
- Joanne Faires

## Link governors

Name	Monitoring role	Governance role
Emma Tidby	Child Protection	Chair of Governors
Dianne Dow	Wellbeing and Mental Health	
Matthew Paradis	Disadvantaged Pupils	
Neil O'Regan	SEND	Chair of Children & Learning
Janet Williams	Health & Safety, Safeguarding and Wellbeing	Chair of Resources
Resources Committee	General Data Protection Regulation (GDPR)	
All Governors	Training	
Emma Tidby	Induction	

## Governor teams

### Academy Working Group

Sasha Howard

Emma Tidby (Chair of Governors)

## Reports

Governor visits      ->      Chair/Headteacher      ->      committee      ->      FGB

Training      ->      Vacancy      ->      FGB

Reports can be put on Governor's secure web-area ready for discussion at the next meeting.